

# Preparation Process for Previously Painted (Acrylic) Surfaces



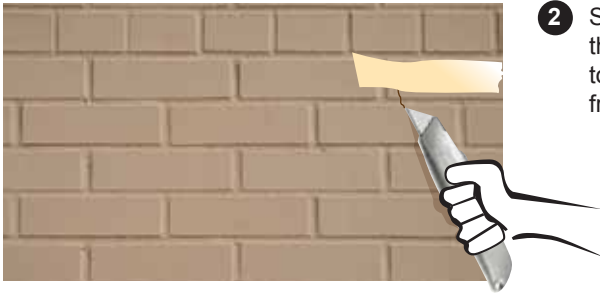
- 1 Check whether the wall is oil or acrylic based paint.

If Oil based paint, it will need to be stripped off completely. Call Peel Away on (02) 9746 6733

If acrylic based paint, check the adhesion of the paint to the surface. Refer to step 2.

**Q** How can I tell if my existing paint is water based or oil based?

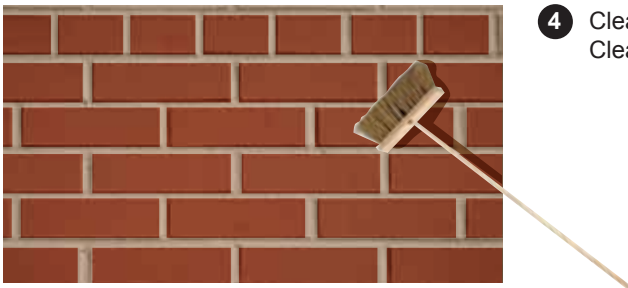
**A** On a rag (preferably a different colour from the paintwork) pour a decent amount of methylated spirits. Hold the rag against the paintwork for about 30 seconds. After this time, rub the paint with the rag. If the paint softens and comes off on the rag, it is water based. If the methylated spirits does not soften it at all, it's probably an oil base.



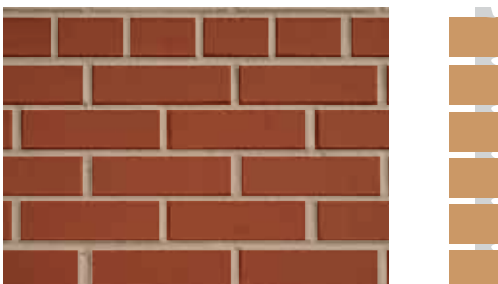
- 2 Score the painted surface with a knife and cover the area with a good quality masking tape. Pull the tape away to check whether the paint adheres well or lifts away from the surface.



- 3 If the paint is flaking or peeling, contact Peel Away on (02) 9746 6733 to effectively remove the paint.



- 4 Clean the entire surface. Refer to the RSA Substrate Cleaning Guidelines Sheet.



- 5 If the joints are raked apply Patch Coarse (+ 1.5kg cement + water) to fill joints and as tight coat over entire surface Apply 1 coat of Patch fine (with up to 20% GP Cement) with steel trowel & feather out as required Wait 24-36 hours before sanding where required for uniformity Proceed with Levels over Previously Painted Surfaces